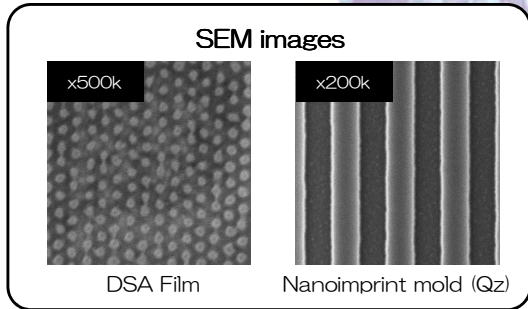


Features

- ◆ High speed and high precision measurement of nano-patterns
- ◆ Aberration-free High Quality Images
- ◆ Charge-mitigated Clear Images
- ◆ High definition (UP to 4,000 × 4,000 pixels)
- ◆ Multi-point CD uniformity measurement, Contour detection and Defect review
- ◆ Capable of handling various substrate materials such as Qz mold, PET film mold, DSA film in addition to Chrome,



Specifications

Resolution	1.5nm@1kV
Repeatability	0.2nm
Definition	4,000 x 4,000 pixels



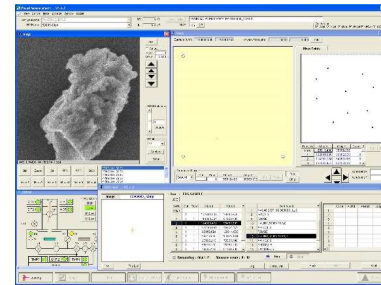
Features

LEXa-10 observes and analyzes Nanoland!

LEXa-10, the DR-SEM, which enables observation and analysis with mitigated charging effect thanks to the low vacuum technology implemented in HOLON photomask CD-SEM.

- ◆ Low vacuum technology enables overall observation and analysis of photomasks and elements contained
- ◆ Low Acceleration Voltage enables Hi Resolution and minimizes the Damage of the specimen during EDS Analysis.
- ◆ KLA RF linkage
- ◆ Auto Defect Review (ADR)
- ◆ Element spectra reporting
- ◆ Element Mapping
- ◆ Low contamination chamber
- ◆ SMIF POD supported (Option)

ADR



Element Spectra Reporting



Specifications

Specimen	6025 4~8" Wafer
SEM spatial resolution	3nm
Acc. Voltage	0.5kV~7kV
Probe Current	50pA~1nA
EDS energy resolution	127eV



Roll-SEM

Roller Mold measurement equipment

HOLON
Solutions for Mask & Wafer Metrology

Features

Holon's Roll-SEM is the only Electron beam measurement equipment on the market for observing and measuring Roller Mold for Nanoimprint without any special preparation or treatment to Roller Mold. It enables easy inspections of nano sized patterns. Roll-SEM is the only and powerful solution for inspecting "seamless" patterns on Roller Mold.

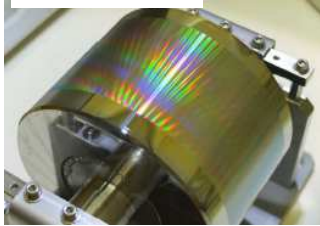
- ◆ Direct observation and measurement of Roller Mold enabled.
- ◆ Non-destructive inspection of specimen without gold deposition enabled.
- ◆ Rolling Mold Stage adopted.
- ◆ Customized Roll-SEM specified to customer (ex. Mold size, etc.) requirements available.



This product is built-to-order and specified to customer requirements.



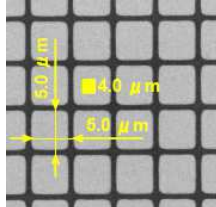
Grid pattern



Roller dimensions

Diameter	100mm
Width	70mm
Exposed Width	50mm

AsahiKASEI



SEM image taken by Roll-SEM

Results

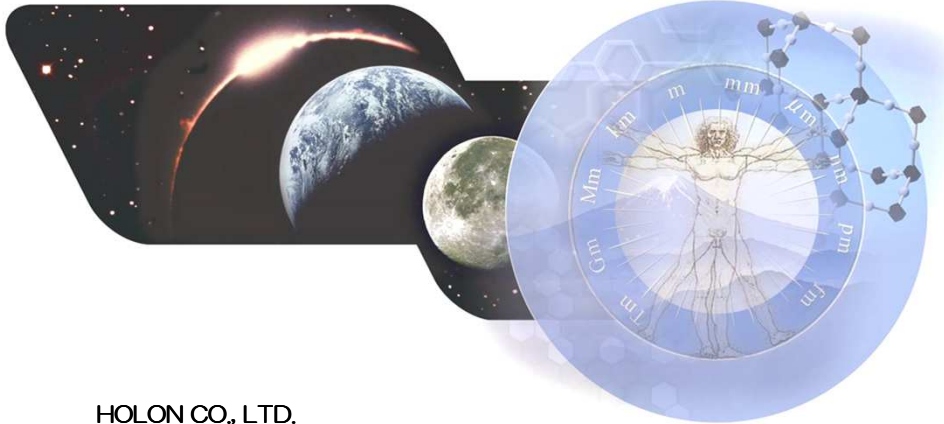
Square size	4μm by 4μm
Pitch	5μm

HOLON

<http://www.holon-ltd.co.jp>

◆Head Office / Sales Department
1026-1 MINAMINAGAI, TOKOROZAWA-SHI, SAITAMA, Saitama 359-0011, Japan
Phone: +81 (4) 2945 2951 Fax: +81 (4) 2936 9026

HOLON



HOLON CO., LTD. Head Office

1026-1 Minaminagai, Tokorozawa-shi, Saitama 359-0011, Japan
Tel : +81-4-2945-2951

Korean Branch

B-630 6F Sigma II Offitel, 18 Gumi-dong, Bundang-gu, Sungnam-City Kyunggi-Do, 463-7411 Korea
Tel : +82-31-621-3060

Agents

USA : OESS Corporation

2043 Zanker Rd., San Jose, CA 95131 USA
Tel : +1-408-654-9126

China : MIC-TECH (Shanghai) Corp.

A2, No.1281, Jin Hu Rd. Pudong New Are, Shanghai
Tel : +86-21-58541899

Taiwan : LIM CHEMICAL CO., LTD.

Techno Center No.51, Changxing Rd., Chang-an Vil., Hukou Township, Hsinchu County 30347, Taiwan
Tel : +886-3-569-0077